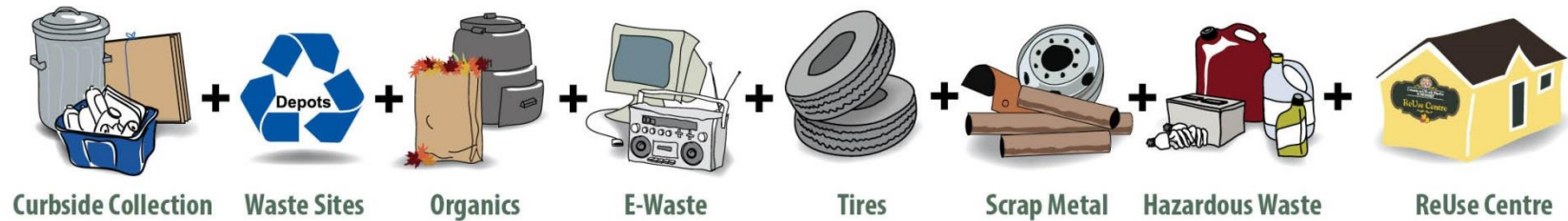


# R.E.A.L Presentation

## 9 September 2019





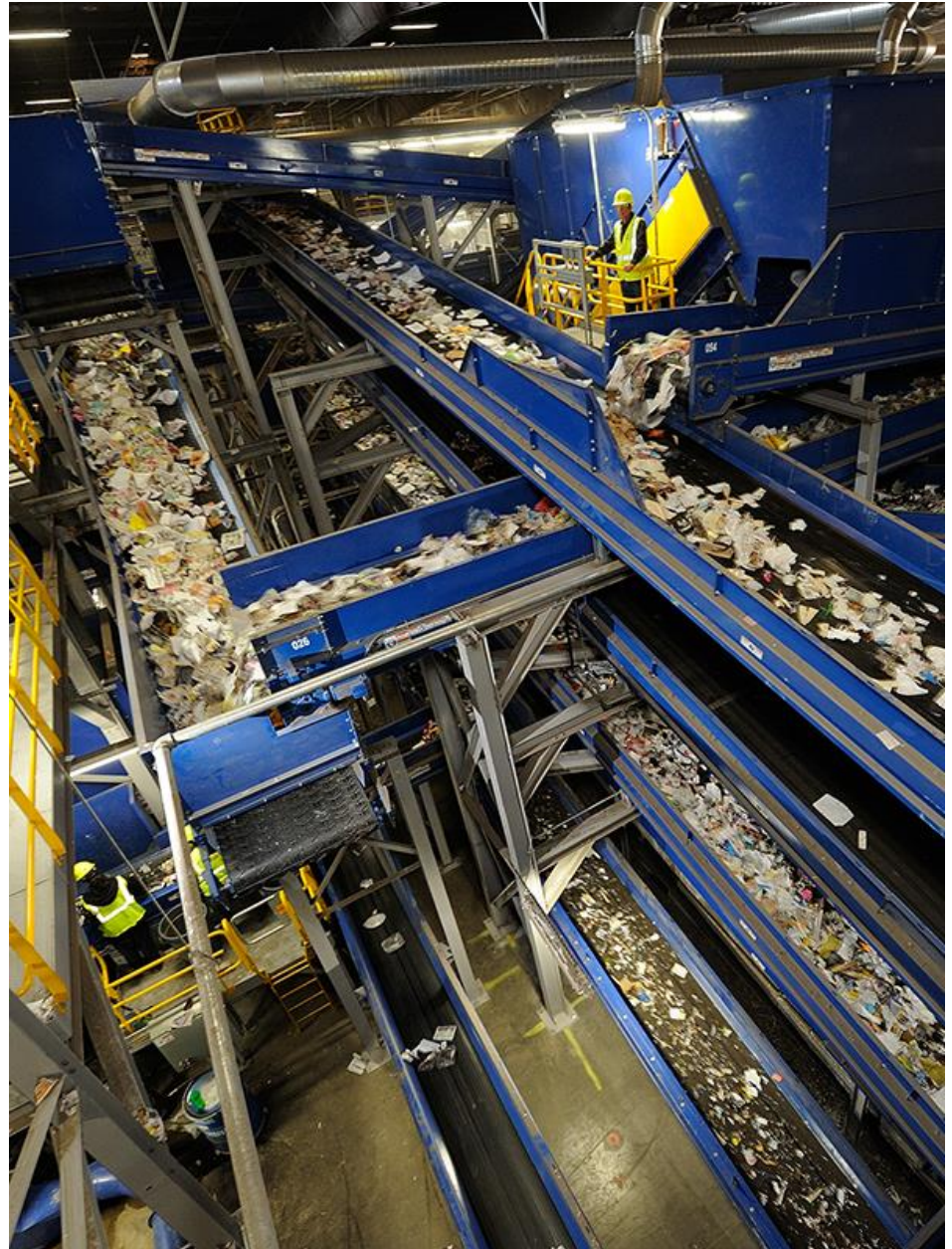
Where does the recycling go after it leaves my driveway in the blue box?





# Material Recovery Facility = MRF

Recyclable material gets sorted by people and machines at the MRF.



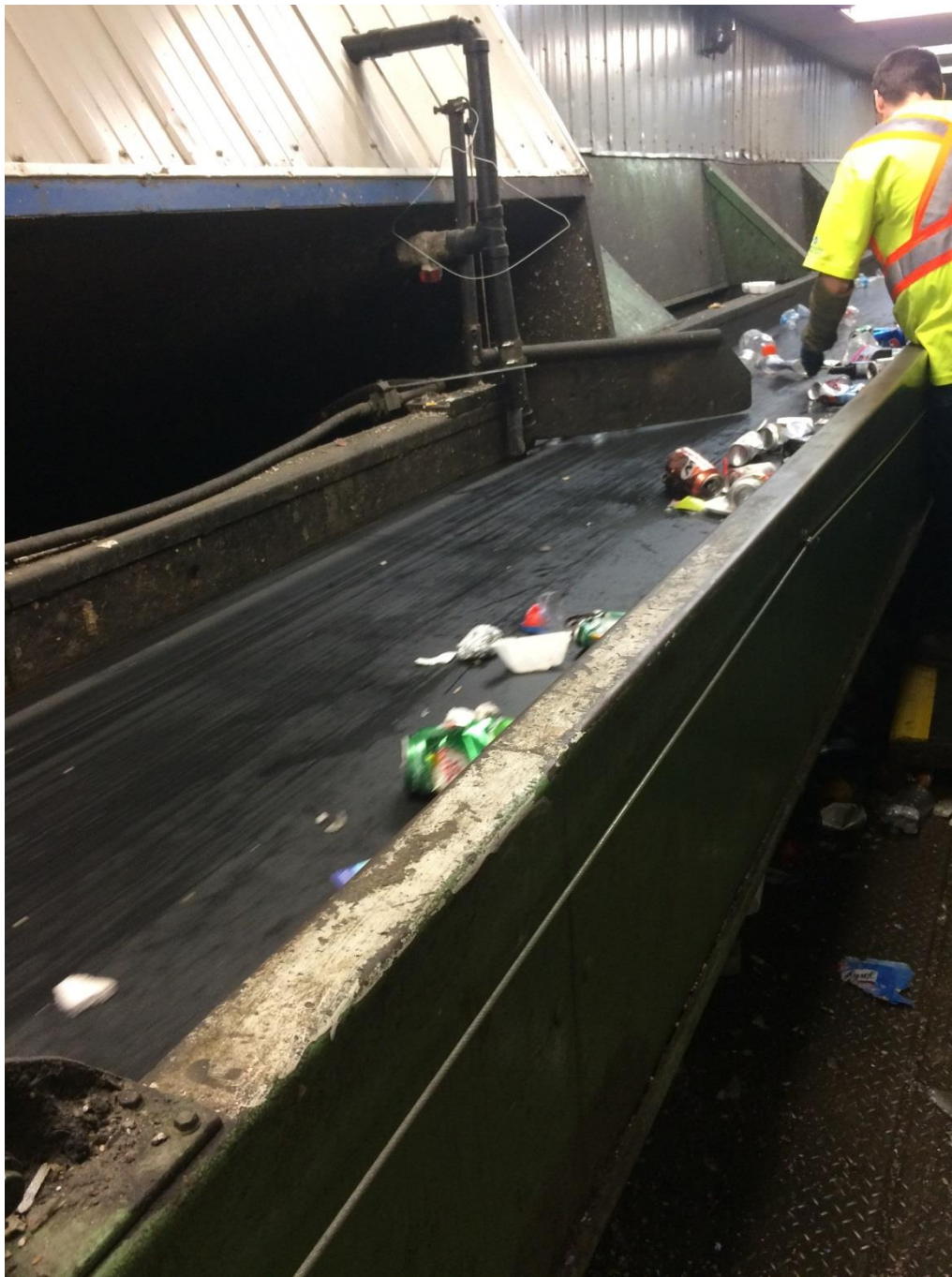






Recycling from  
Smiths Falls  
was unloaded  
from the truck  
the day we  
visited the  
MRF.





Recycling  
streams =  
Cans  
Plastic  
Glass  
Paper  
Cardboard









Bales of material go on trucks to other factories to be made into new things.





Cans are  
made of  
aluminum  
and steel.





What  
other  
things  
could be  
made out  
of that  
metal?



Now you know what your empty  
beverage containers can become.







Give empty beverage  
containers a new life.

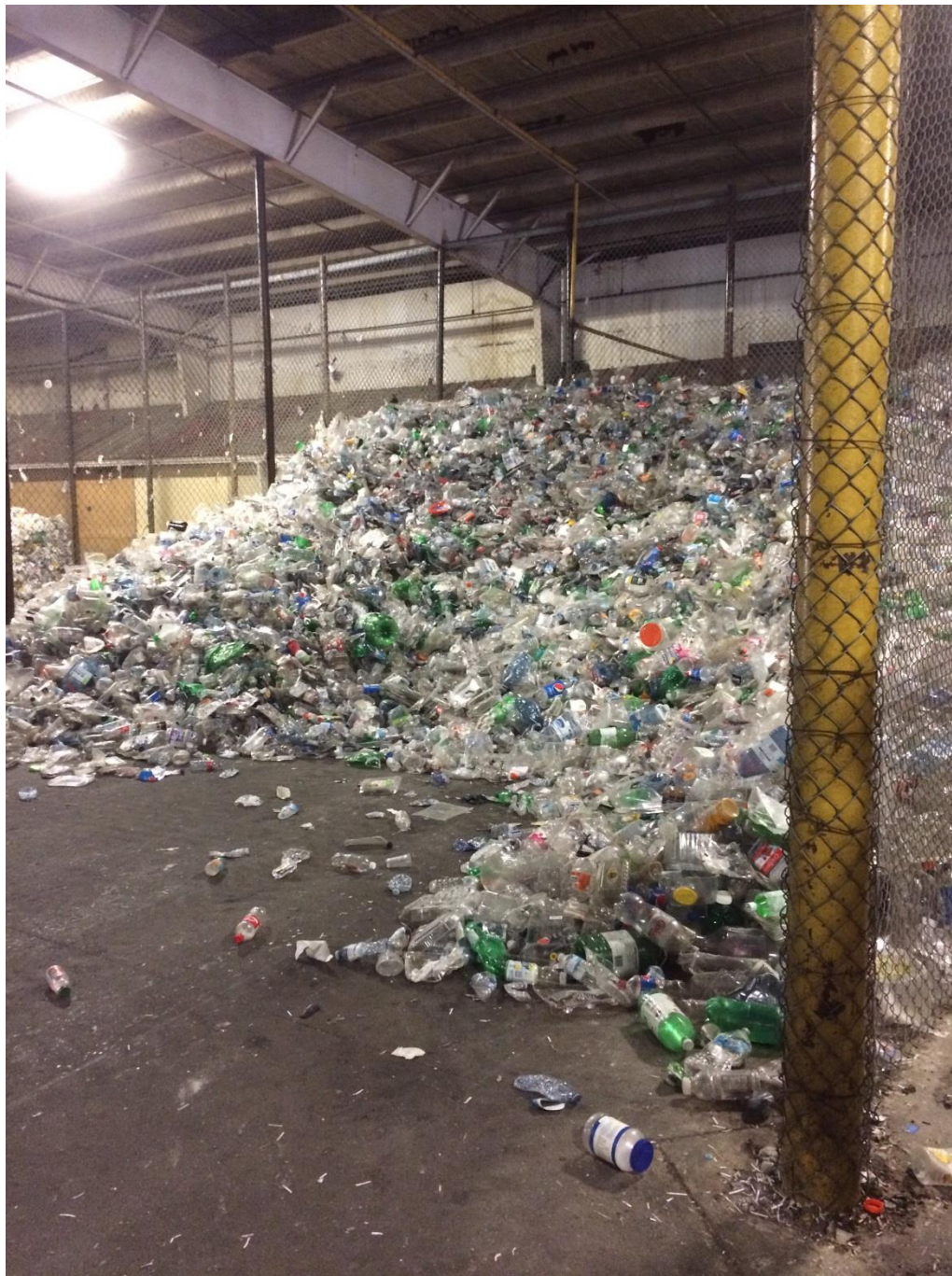




Now you know what your empty  
beverage containers can become.







Lots of  
plastic  
goes to the  
MRF for  
recycling.









What  
other  
things  
could be  
made out  
of that  
plastic?



Now you know what your empty  
beverage containers can become.





Get comfortable  
with recycling your plastics.





Now you know what your empty  
beverage containers can become.







Lots of paper comes to the MRF. Some of it is shredded, some of it is still in sheets.



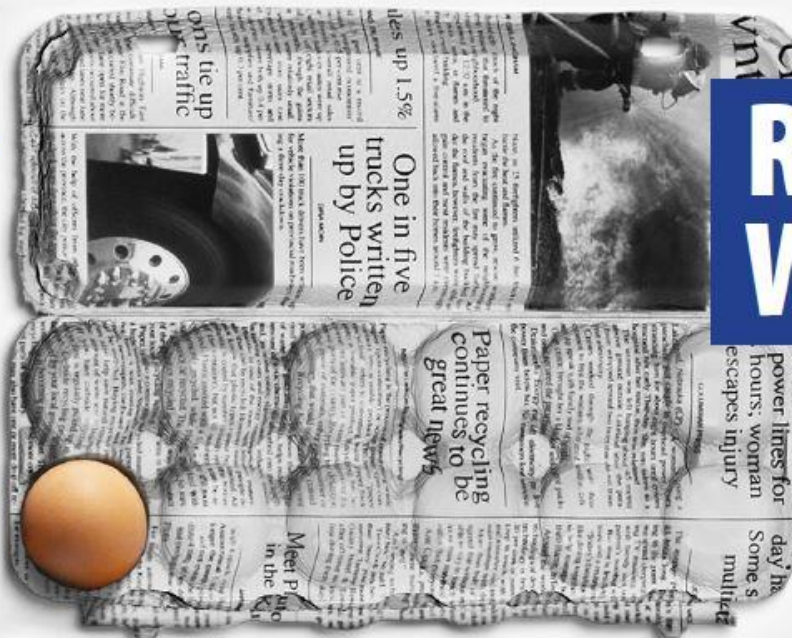
Cardboard  
is a kind of  
paper too.





What  
other  
things  
could be  
made out  
of that  
paper?

**Recycled newspapers  
turn into all sorts of  
things,  
like egg cartons!**



**Recycling  
WORKS!**

Beckwith | Carleton Place | Drummond/North Elmsley | Lanark Highlands | Mississipi Mills | Montague | Perth | Smiths Falls | Tay Valley

**Local Municipalities – Together We're Better.**

Visit your municipality's website for more recycling information.

Space provided through a partnership between Industry and Ontario municipalities to support waste diversion programs.





What  
about  
Tetra  
Packs  
and  
juice  
boxes?  
What do  
those  
get  
turned  
into?



Give empty  
beverage containers  
a new life.







Now you know what your empty  
beverage containers can become.







What  
can glass  
be  
recycled  
into?





Give empty  
beverage containers  
a new life.



There are rules about recycling. It only works if we put the right material in the blue box.



What kinds of things are NOT recyclable?



# **Food scraps in your recycling bin break the cycle.**

Keep things like banana peels, apple  
cores and tea bags out of your blue box.



If the wrong things go in the blue box, it  
turns recycling into garbage!

**Dirty containers in  
your recycling bin  
break the cycle.**

Empty and rinse containers before  
putting them in your blue box.



**Food containers must be empty  
and rinsed out.**



# **The wrong items in your recycling bin break the cycle.**

Keep things like garden hoses, bike tires  
and yard waste out of your blue box.



If it's not recyclable, it's better to put it  
in the garbage.

# The wrong items in your recycling bin break the cycle.

Keep things like holiday lights and  
decorations out of your blue box.



If you've replaced something that  
still works, give it away or take it to  
the ReUse Centre or Thrift Shop.



What about clear bags? Can I put my recycling in clear bags?



Please don't use clear bags! Plastic bags clog up the MRF! They get tangled in the machinery. They lay on top of other recycling and good recyclables get sent into the garbage by mistake at the MRF. All of this makes recycling more expensive than it needs to be.

**Now available at the Township office:**  
**Blue Boxes with a Lid!**

\$8.00 each  
(FREE when you  
bring in your  
broken one)





You can help by taking this information home to your family.



# WasteMatters 2019



D/NE has switched to a two stream recycling system: yellow box and blue box are collected on alternate weeks.

Separating containers from fibres produce cleaner recycling material that is easier to handle and brings in more money.

**Keep up the good work!**  
For this Recycling Collection Schedule please refer to the municipal website.

City of Drummond/North  
www.drummond.ca/recycling

## Yellow Box One Week (Containers)

### What's IN CONTAINERS go in your YELLOW BOX:

#### PLASTIC

- #1 - #7 Plastic food & drink containers & plastic egg cartons (NOT #6 polystyrene/Styrofoam)

#### GLASS

- Food and beverage jars and bottles (Return deposit containers for refund)

#### METAL

- Aluminum pop cans, steel food cans, aluminum foil and trays (Clean)
- Metal paint cans (Empty, dry & lids removed)

#### GABLE TOPS AND TETRA PAKS

- Including milk, juice cartons, drinking boxes and spiral wound (cardboard) containers (Clean)

Only put approved items into the Blue and Yellow Boxes.  
**SORT IT RIGHT!**

RETURN deposit containers to the BEER STORE or DONATE to the Drummond Scouts at Code Road Landfill



Stomp 'n' Stack

## Blue Box Other Week (Fibres)

### What's IN FIBRES go in your BLUE BOX:

#### PAPER

- Newspapers & flyers (Plastic bags removed)
- Magazines, catalogues, junk mail, office & shredded paper (NOT in Plastic bags)
- Telephone books, reading books (Hard covers removed)

#### BOXBOARD

- Cereal and other food boxes, tissue boxes, shoe boxes
- Paper rolls from paper towel and toilet paper

#### CARDBOARD

- Corrugated boxes (Flattened and banded)
- Pizza boxes (Clean)

#### Stomp 'n' Stack



#### WE CAN'T ACCEPT THIS BECAUSE:

- ☐ Containers go out next week in your Yellow Box.
- ☐ Fibres go out next week in your Blue Box.
- ☐ The box has both containers and fibres. We collect ONLY containers one week and ONLY fibres on alternate weeks. Check the calendar that came with your Yellow Box.
- ☐ Items are not accepted under our current program.
- ☐ Items are contaminated with food.
- ☐ We do not accept recycling in plastic bags.
- ☐ Other

www.drummond.ca  
or 613-287-6600

When the collection truck sees uncollectible material in your Yellow or Blue Box or Garbage, they will leave items behind with a tag explaining why.

## Garbage Every Week

### What's OUT of Recycling goes in your GARBAGE!



- Styrofoam (#6 polystyrene)
- Paper coffee cup & waxed cardboard
- Plastic bags (grocery, Zip-lock & all film plastic)
- Flower/plant pots & trays
- Aerosol cans
- Chip bags and candy bar wrappers
- Non-food container metal, plastic or glass (like clothes hangers, toys, dishes)
- Broken glass, windows, lights bulbs
- Soiled paper
- Oil Containers
- Reports with plastic spines
- Pizza boxes with food residue

#### NO Aerosol Cans!

Dispose at the seasonal HHW Depot in Carleton Place.

#### NO Portable Propane Cylinders!

Take to Hazardous Waste Depot

#### WE CANNOT RECYCLE:

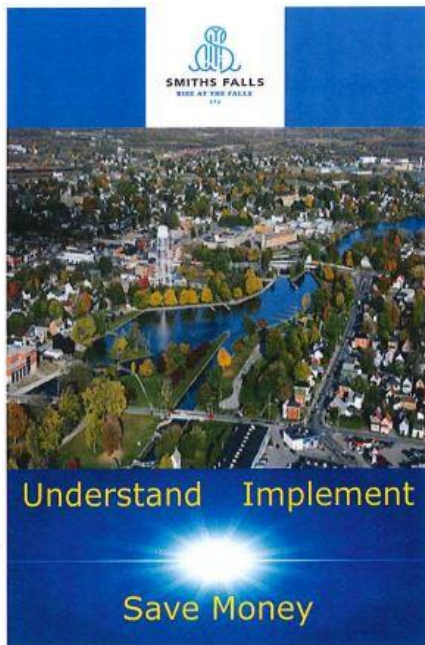
- styrofoam
- film plastic (bags)
- non-container glass

#### Please remember

- 7am set-out on collection day
- NO recycling in plastic bags
- All recycling must be in a Blue or Yellow Box
- Containers must be rinsed clean for recycling; no food residue
- 2 Garbage bags per household per week without tags
- All other garbage bags require tags - \$2 each (at Municipal Office & Landfill)
- Maximum garbage bag weight 40 lbs
- Garbage containers not to exceed 17 gallons
- No large item pick up, No leaf & yard waste pickup

**SORT IT RIGHT!**





## Smiths Falls Integrated Waste Management System



www.smithsfalls.ca or 613-283-4124 ext. 1147



## Alternative Recycling

Electronics can go to REAL located at 85 William St. N. Call (613) 283-7999 for more information.

Leaf and Brush can go to the Compost Site at 43 Cornelia St. W. Call (613) 283-4124 ext. 1147 for more information.

Light bulbs can go to Westburne Electrical Supply Store located at 94 Cornelia St. W. Call (613) 283-2270 for more information (There is a disposal cost).

Chemical Waste can be taken to the Household Hazardous Waste Site in Carleton Place located at 122 Patterson Cres. Call (613) 257-2253 for more information.

Scrap Metal can be taken to Falls Iron and Metal located at 54 Uphill St. Call (613) 283-2240 for more information.

OR

GIM (Glenview Iron & Metal) located at 3954 hwy. 43 West. Call (613) 283-5230 for more information.

Thanks for re-using and repurposing



## BlueBox Recycling (Fibres)

### The BlueBox is for Fibre and Papers.

Residents of Smiths Falls have done such a great job of recycling that some find one box is not enough for all the items. So, we have introduced a YellowBox to take drink cartons and dairy containers.

### ✓ What goes in

- Boxboard (cereal boxes, rolls from paper towels & toilet tissue, shoe boxes, tissue boxes etc.)
- Telephone Books
- Paper egg cartons
- Brown paper bags
- Magazines, catalogues, junk mail & office paper
- Newspaper & flyers (plastic bags removed)
- Detergent Boxes



## YellowBox Recycling (Containers)

### The YellowBox is for containers made up of plastic, glass and metal.

### ✓ What goes in

- Aerosol cans (empty food, hair spray, cleaners, air fresheners etc.)
- Glass bottles & jars (and lids)
- Metal cans (aluminum and steel)
- Aluminum foil (foil/trays/plates)
- Clear Clam shell containers (bakery, meat & takeout trays with recycling numbers)
- Juice & soup boxes (tetra-packs)
- Plastics #1 to #7 (with the recycling symbol 3 arrows)

Please remember to rinse out & clean containers before placing in your YellowBox.

Curbside YellowBox and BlueBox Recycling Collection takes place on alternate weeks. Remember to place your YellowBox, BlueBox, and Garbage at the curbside by 7:00 am on the day of collection.

## Garbage



### For What's Left

By actively recycling and composting, you should not have much left.

Garbage collection is every week, and each bag over 2 bag limit requires a garbage tag on it. Tags are made available at Town Hall at a cost of \$3.00 each. Large items require 2 tags. If you miss your collection day contact our waste dept.

Town Hall Hours:  
Monday to Friday  
8:00 am to 4:30 pm

Please do not put Needles/Sharps into the garbage or recycling bin. Pharmacies take these items back.

## Backyard Composting

### ✓ What goes in



### Any type of food: What stays out

- Meat, bones, dairy
- Vegetables, sauces
- Breads, fruit, nuts
- Egg shells, etc.
- Plastic bags
- Any plastic or metal (e.g. twist-ties)
- Ashes
- Drinking Cups
- Motor oil
- Brush & yard waste

### Soiled paper products:

- Paper towels, tissues
- Soiled pizza boxes
- Coffee filters, tea bags

Kitty litter and pet waste

### Economical Tip:

Your decomposed compost can be used as fertilizer in your gardens which saves you money from buying fertilizer/dirt.

Please, absolutely no plastics, even bio-degradable and compostable ones!

## BlueBox Recycling

(Fibres)



### What stays out

- Soiled paper
- Pizza boxes with food residue on them
- Plastic egg cartons
- Reports with plastic spin
- Waxed cardboard

### Recycling Fact:

The more you recycle, the more you money you save!

For further information on what items can and can't be recycled, download the recycling **app** called \_\_\_\_\_ on your smart phone or tablet. This app will tell you the correct bin a recyclable item of question should go in. This app is **FREE** and can be downloaded from \_\_\_\_\_.

## YellowBox Recycling

(Containers)



### What stays out

- Film plastic (bags & cellophane)
- Polystyrene (e.g. Styrofoam trays & cups)
- Paper coffee cups
- Clear or black plastic trays or boxes
- Plant pots and trays
- Containers that held hazardous products
- Tupperware or Rubbermaid containers and lids
- Plastic CD, VHS or tape cassette cases
- Plastic film and plastic bags
- Very small plastic (serving creamers, fruit cups etc.)

www.smithsfalls.ca or 613-283-4124 ext.1147

Thank you for doing your part.



