

Journey To Sustainability

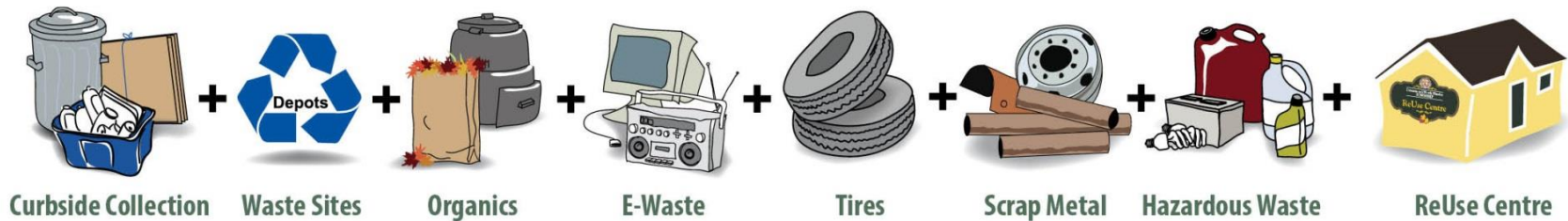
Recycling:

Where does it go after it leaves my driveway?

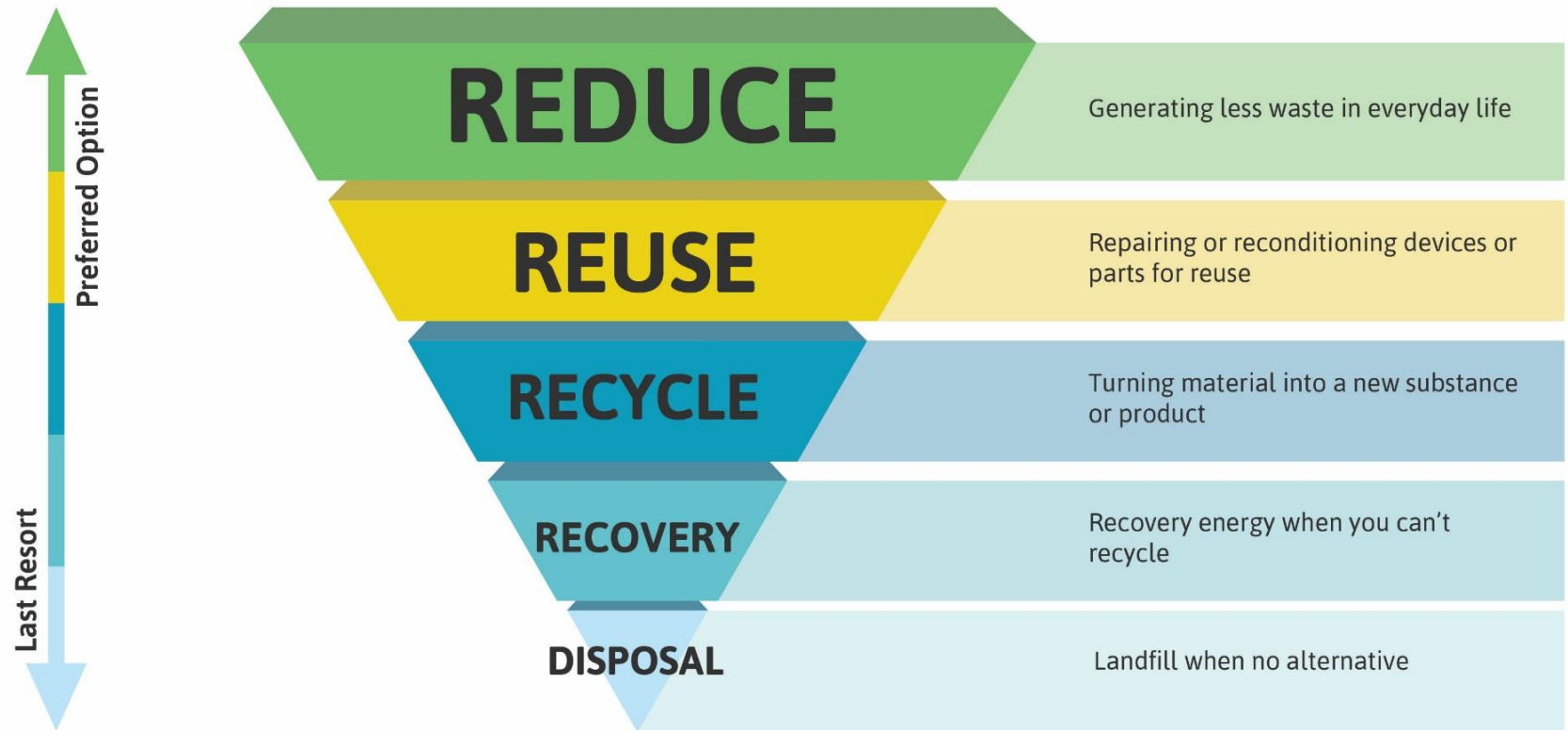
What happens to it then?

Is it really transformed into new items?

What about the global collapse of the recycling industry?



Responsible Waste Management Hierarchy

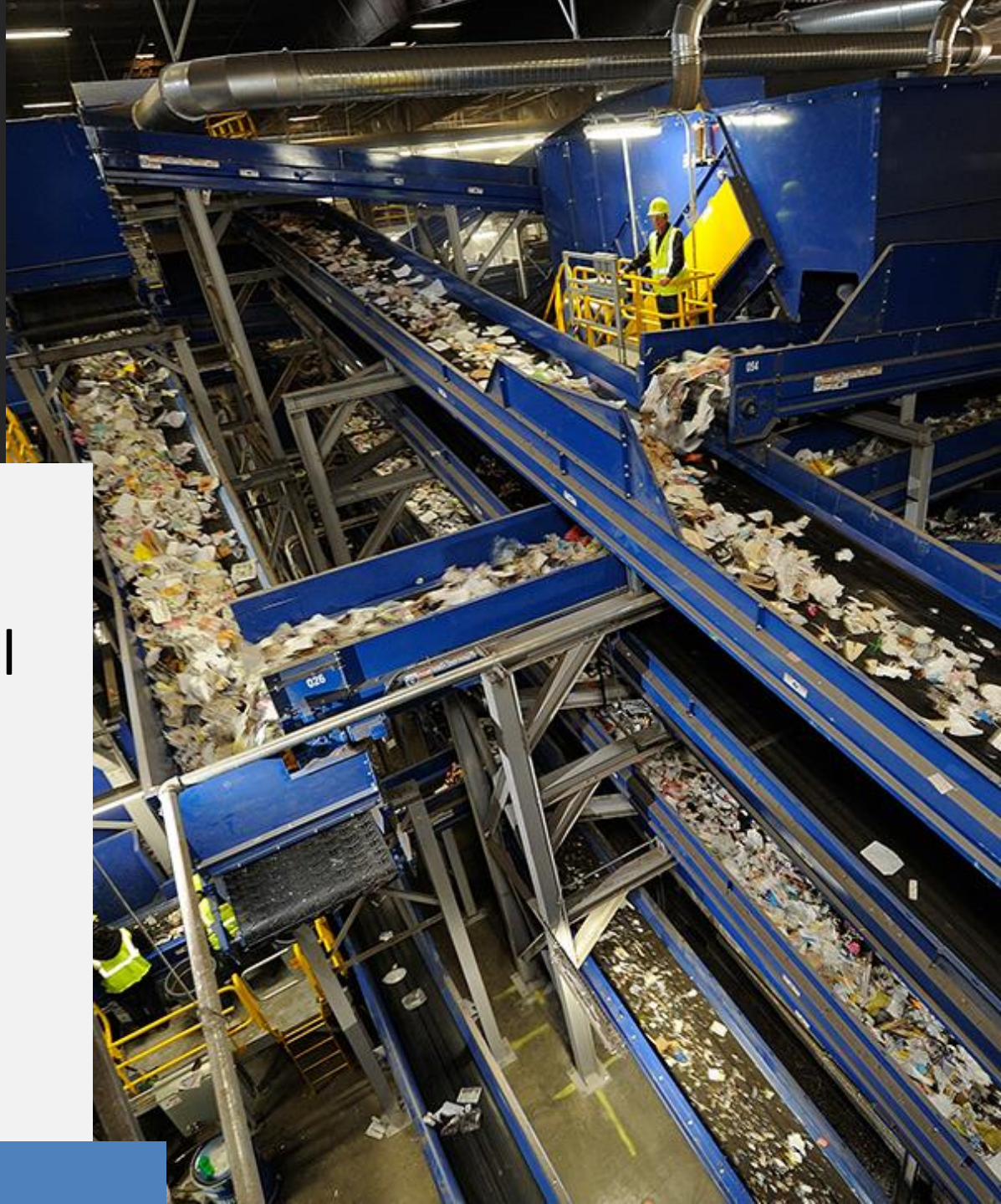


Where does
the recycling
go after it
leaves my
driveway?



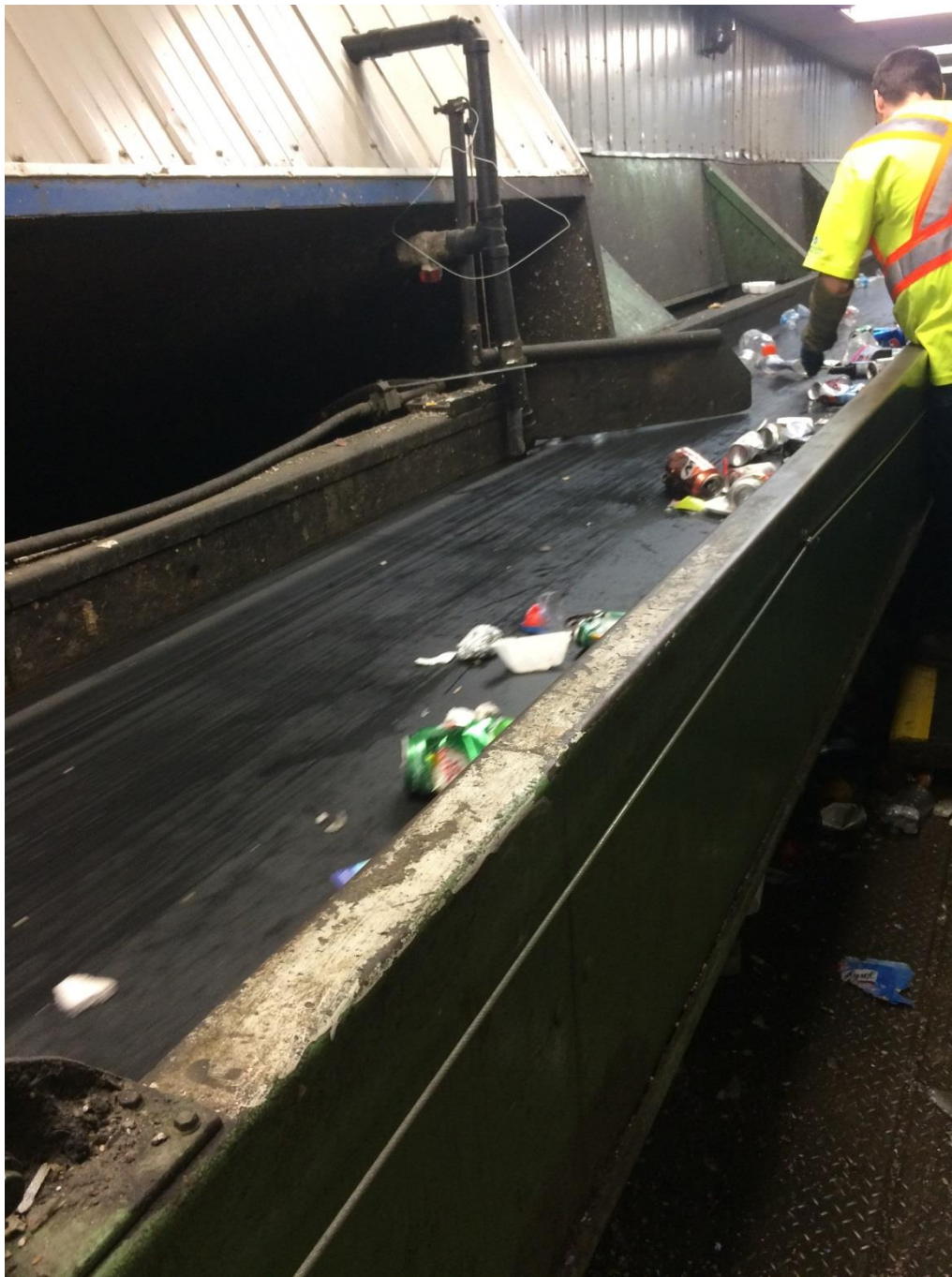
Material Recovery Facility = MRF

Recyclable material
gets sorted by
people and
machines at the
MRF.









Recycling
streams =
Cans
Plastic
Glass
Paper
Boxboard
Cardboard

Recycling
from Smiths
Falls was
unloaded
from the
truck the day
I visited the
MRF.





Bales of material are transported to factories for re-manufacture.



Cans are
made of steel
and
aluminum,
which can be
recycled over
& over again.





Now you know what your empty
beverage containers can become.





Give empty beverage
containers a new life.





Now you know what your empty
beverage containers can become.



Plastic is
made from
many
different
types of
resin.



Many plastics degrade in quality when recycled and can only be recycled once or a handful of times. That's one reason why consumer items made from recycled plastic cannot be put in your recycling bin for collection.



Water bottles
are made of
P.E.T. which
can be
recycled
indefinitely,
like steel and
aluminum.





Now you know what your empty
beverage containers can become.



Get comfortable
with recycling your plastics.





Now you know what your empty
beverage containers can become.





Mixed paper, boxboard & cardboard comes to the MRF for sorting.

Paper and cardboard are made into other objects like ...



Fire crews battle downtown blaze



By Jeffery M. Smith

Firefighters from the night shift, which had been alerted to a fire in the downtown area, arrived at 12:32 a.m. in the area, at the scene of the fire. The fire was a three-alarm fire, and firefighters were working to contain it.

Trucks up 1.5%

By Jeffery M. Smith

The price of a new truck has risen 1.5 percent in the last year, according to a report by the National Truck Manufacturers Association. The report says that the price of a new truck has risen 1.5 percent in the last year, according to a report by the National Truck Manufacturers Association.

Trucks tie up downtown traffic

By Jeffery M. Smith

The number of trucks in downtown areas has increased, causing traffic problems. The report says that the number of trucks in downtown areas has increased, causing traffic problems.

One in five trucks written up by Police

By Jeffery M. Smith

More than 100 truck drivers have been written up for vehicle violations on provincial roadways, according to a three-day crackdown.



With the help of officers from other agencies, the city police conducted a three-day crackdown on truck drivers.

in power lines for 8 hours; woman escapes injury

By Jeffery M. Smith

Lakeland, Nebraska (CP) — A woman, hanging a line, got caught in a high-voltage power line, stranding her for about eight hours until others rescued her early Thursday. She was taken to a hospital after her rescue, then was released. The woman was left hanging about 45 meters above ground outside Lakeland after the power lines were cut. Two lines that she was hanging from were cut, and she was rescued.

Paper recycling continues to be great news

By Jeffery M. Smith

Paper recycling is the process of converting waste paper (post-consumers) or scrap paper (pre-consumers) into a usable product. The paper recycling process refers to converting waste paper back into a usable paper product. Many people think of paper as a waste, but it is actually a valuable resource. Paper recycling is a great way to reduce waste and conserve resources.

day ha Some s multic

By Jeffery M. Smith

The paper industry is the largest in the world, and it is growing. The paper industry is the largest in the world, and it is growing. The paper industry is the largest in the world, and it is growing.

Meet P in the K

By Jeffery M. Smith

With a quick, easy, and safe method, you can meet P in the K. The method is simple and easy to use, and it can help you meet P in the K.

Tetra Packs
and juice
boxes are
made into ...





Give empty
beverage containers
a new life.





Now you know what your empty
beverage containers can become.



The market for recycled glass is very poor, so glass adds expense to municipal recycling.



Return
deposit
containers to
the Beer
Store or
donate them
for
fundraisers.

Return deposit containers to the Beer Store

If you put beer, wine, liquor bottles in your
Blue Box, you're paying twice:

Deposit at Purchase **+** the Full Cost of Recycling

The township gets no funding for
deposit containers, so you pay extra.

**Please RETURN deposit containers to
the Beer Store**

**Or DONATE to the Drummond Scouts
at Code Road Landfill**



Give empty
beverage containers
a new life.



There are rules about recycling. It only works if we put the right material in the blue box.



What kinds of things are **NOT** recyclable?

Recycling is for consumer packaging.

If it's not recyclable, it's better put in the garbage.

**The wrong items in
your recycling bin
break the cycle.**

Keep things like garden hoses, bike tires
and yard waste out of your blue box.



Food containers must be empty and rinsed.

**Dirty containers in
your recycling bin
break the cycle.**

Empty and rinse containers before
putting them in your blue box.



If the wrong things go in the blue box, it contaminates the load & turns recycling into garbage.

**Food scraps in
your recycling bin
break the cycle.**

Keep things like banana peels, apple
cores and tea bags out of your blue box.



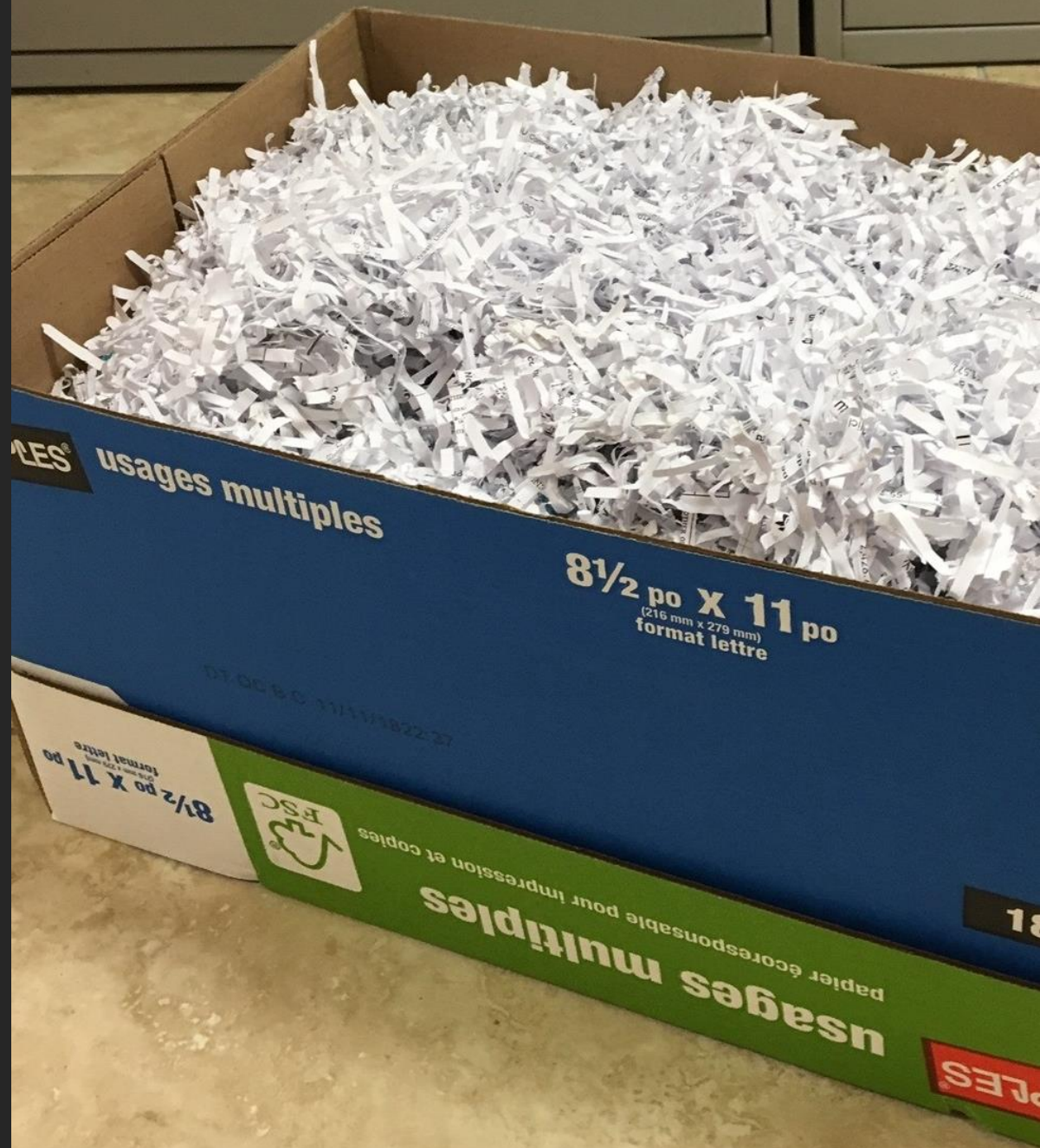
What about
clear bags?
Can I put
my
recycling in
clear bags?



Many MRFs
cannot
accept
plastic
bags.



You can set
shredded
paper out in
a cardboard
box on your
'fibre week.'



Plastic bags clog up the MRF! They get tangled in the machinery and force shut downs of the line.
This drives up the cost of recycling.

NO Stringy Thingys



Check this Recycling List Twice!

'Nice List' (Recyclable):

- ✓ Cardboard packaging
- ✓ Regular paper wrapping paper
- ✓ Cardboard rolls from wrapping paper
- ✓ Plastic serving trays (#1-#7 NOT #6)
- ✓ Clean aluminum trays and foil
- ✓ Cracker boxes
- ✓ Metal cookie tins

'Naughty List' (NOT Recyclable):

- ✗ Old Christmas lights & ornaments
- ✗ Tape dispensers
- ✗ Saran wrap, cellophane or foil wrapping paper
- ✗ Ribbon & bows
- ✗ Artificial garland & tinsel
- ✗ Wooden boxes (i.e. for clementine oranges)
- ✗ Cracker box liners (same as cereal box liners)
- ✗ Cheese wrappers
- ✗ Styrofoam
- ✗ Wires or extension cords

Beckwith | Carleton Place | Drummond/North Elmsley | Lanark Highlands | Mississippl Mills | Montague | Perth | Smiths Falls | Tay Valley

Local Municipalities – Together we are better.

Visit your municipality's website for more recycling information.

Space provided through a partnership between industry and Ontario municipalities to support waste diversion programs.

Recycling Tip:
manage small
items in your
recycling box
so they don't
get lost at the
MRF and end
up in the
garbage.



Recycling Tip:
If a container's
lid is made of
the same
material, crush
the container
and screw the
lid back on.



Let's
review!

Yellow Box One Week (Containers)

What's IN CONTAINERS



go in your YELLOW BOX:



PLASTIC

- #1 - #7 Plastic
food & drink containers &
plastic egg cartons
(NOT #6 polystyrene/Styrofoam)



GLASS

- Food and beverage jars and
bottles (Return deposit
containers for refund)



METAL

- Aluminum pop cans, steel food
cans, aluminum foil and trays
(Clean)
- Metal paint cans
(Empty, dry & lids removed)



GABLE TOPS AND TETRA PAKS

- Including milk, juice cartons,
drinking boxes and spiral
wound (cardboard) containers
(Clean)

Only put approved
items into the Blue
and Yellow Boxes.

SORT IT RIGHT!

Stomp 'n' Stack



RETURN deposit containers to the **BEER STORE**
or **DONATE** to the **Drummond Scouts** at
Code Road Landfill

Let's review!

Blue Box Other Week (Fibres)

What's IN FIBRES

go in your BLUE BOX:



PAPER

- Newspapers & flyers (Plastic bags removed)
- Magazines, catalogues, junk mail, office & shredded paper (NOT in Plastic bags)
- Telephone books, reading books (Hard covers removed)



BOXBOARD

- Cereal and other food boxes, tissue boxes, shoe boxes
- Paper rolls from paper towel and toilet paper



CARDBOARD

- Corrugated boxes (Flattened and bundled)
- Pizza boxes (Clean)

Stomp 'n' Stack



WE CAN'T ACCEPT THIS BECAUSE:

- ☐ Containers go out next week in your Yellow Box.
- ☐ Fibres go out next week in your Blue Box.
- ☐ The box has both containers and fibres. We collect ONLY containers one week and ONLY fibres on alternate weeks. Check the calendar that came with your Yellow Box.
- ☐ Items are not accepted under our current program.
- ☐ Items are contaminated with food.
- ☐ We do not accept recycling in plastic bags.
- ☐ Other

www.dnrtownship.ca
or 613-257-6600

When the collection truck sees uncollectible material in your Yellow or Blue Box or Garbage, they will leave items behind with a tag explaining why.

Let's
review!

These are not accepted in recycling!

They go in your garbage!



- Styrofoam (#6 polystyrene)
- Plastic bags (grocery, Zip-lock & all film plastic)
- Paper coffee cup & waxed cardboard
- Flower/plant pots & trays
- Oil containers or aerosol cans
- Chip bags and candy bar wrappers
- Non-food container metal, plastic or glass (like clothes hangers, toys)
- Broken glass, windows, lights bulbs
- Soiled paper
- Staples, paper clips, etc.
- Reports with plastic spines
- Pizza boxes with food residue

**Only put approved items into
the Blue and Yellow boxes.
Please SORT IT RIGHT!**



WasteMatters 2020

D/NE has a two stream
recycling system:



**yellow
box**

**blue
box**

are collected on alternate
weeks with your weekly
garbage collection.

See inside for Recycling Collection Schedule
Curbside collection changes are coming in
2020 to serve you better. Stay tuned ...



Township of Drummondville
www.dnetow...

Curbside Collection Schedule

April 2020

Wed	Thur	Fri	Sat
1	2	3	4
8	9	10	11
15	16	17	18
22	23	24	25
29	30		

every week on your collection day.

May 2020

Wed	Thur	Fri	Sat
		1	2
6	7	8	9
13	14	15	16
20	21	22	23
27	28	29	30

Yellow Box are picked up on
garbage collection day.

June 2020

Wed	Thur	Fri	Sat
3	4	5	6
10	11	12	13
17	18	19	20
24	25	26	27

See Jan - March other side...
Collection Schedule in June.



THANK YOU